

# Energy Efficient Buildings & NEB Matchmaking and Study Visit

11-13 MARCH 2026  
BRUSSELS

HORIZON  
europe

**NCBR**  
National Contact Point  
for EU Research Programmes

  
**Industry  
Contact  
Point**  
Low-emission  
Technologies  
and Clean Energy

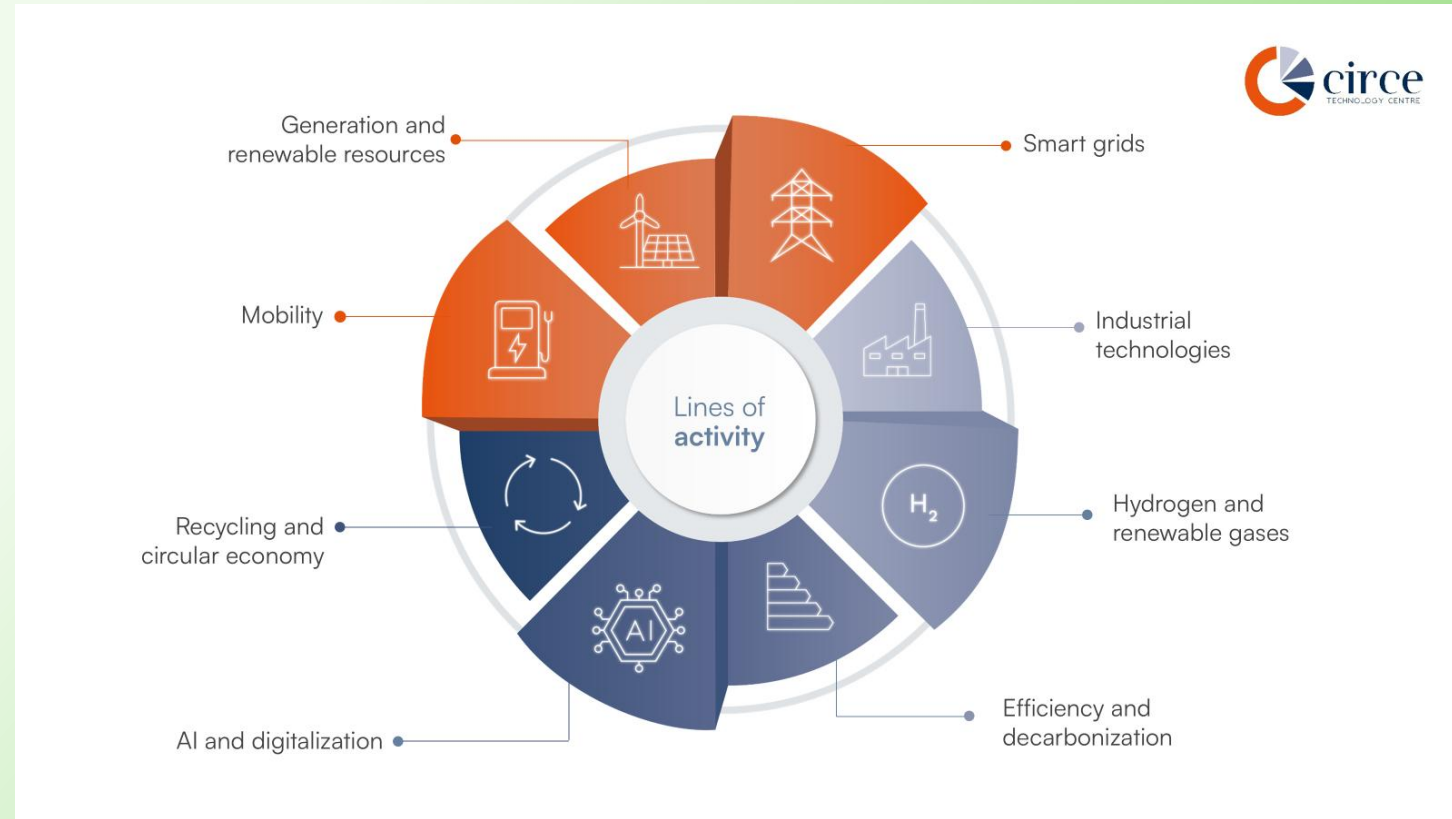
**NCBR**  
National Centre for Research  
and Development

HORIZON  
europe

# CIRCE- Centro Tecnológico

- ❑ **79 projects funded under HE (23 coordinated).**
  - ❑ **INCUBE – Industrialization of retrofitting solutions for residential buildings**  
<https://incubeproject.eu>
  - ❑ **BIOS MATER – Bio-based construction products for the construction sector**  
<https://biosmater.eu/>

**Contact:** [lmLou@fcirce.es](mailto:lmLou@fcirce.es)  
[www.fcirce.es](http://www.fcirce.es)



# Regenerative vertical spaces for climate-resilient neighbourhoods.

HORIZON-NEB-2026-01-REGEN-03 (or HORIZON-NEB-2026-01-REGEN-01)

- Innovative, circular and community-driven solutions that unlock the potential of under-used vertical space to provide green areas and climate-adaptive functions within the existing built environment.**
- Innovation lines:**
  - Vertical Nature-Based Solutions (NbS) for urban regeneration**
  - Circular water & resource integration**
  - Socially embedded & Co-created vertical spaces**



Industry  
Contact  
Point

Low-emission  
Technologies  
and Clean Energy

# Expression of Interest

- ❑ **CIRCE brings strong expertise in:**
  - ❑ Urban sustainability and climate resilience
  - ❑ Sustainability & environmental/socio-economic assessment
  - ❑ Water reuse and alternative water resource integration
  - ❑ Climate adaptation strategies
  - ❑ Nature-Based Solutions integration
  
- ❑ **What we are looking for:**
  - ❑ Technical co-design & engineering partners
  - ❑ Architecture firms
  - ❑ Implementation & industrial partners
  - ❑ companies able to manufacture and install the systems
  - ❑ SMEs developing modular green infrastructure)
  - ❑ Demonstration sites & public authorities
  - ❑ Municipalities willing to host pilot projects
  - ❑ Public housing agencies
  - ❑ Urban regeneration agencies
  - ❑ Building owners open to testing innovative vertical solutions
  - ❑ Social sciences & co-creation experts
  - ❑ International & transdisciplinary partners
  - ❑ NGOs
  - ❑ Urban innovation networks
  - ❑ International associations

Design

Engineering

Implementation

Demonstration

Impact assessment

Market uptake

Policy and social  
integration