



Expert evaluator experience sharing Horizon 2020

Katarzyna J. Blinowska

Zakład Fizyki Biomedycznej, Wydział Fizyki UW
Inst. Biocybernetyki i Inżynierii Biomedycznej PAN

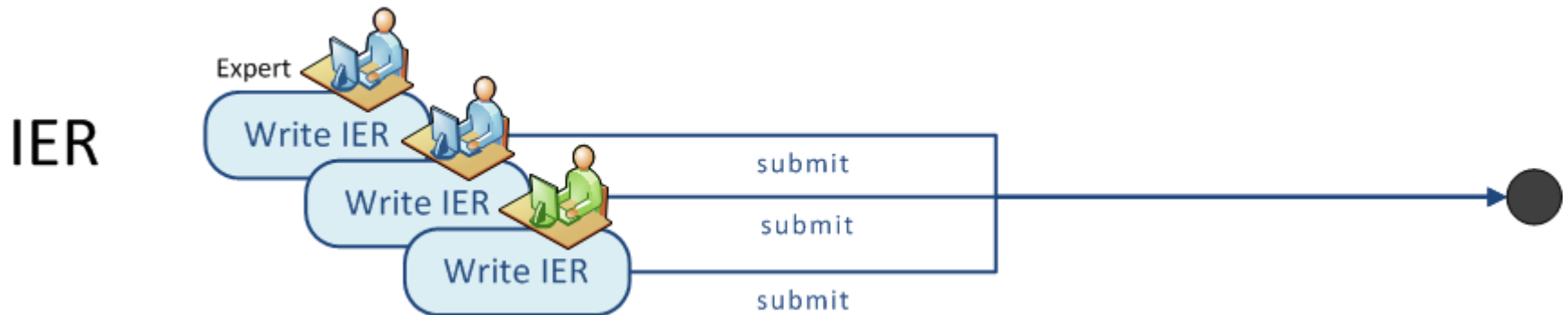




Evaluation process



Step 1: Individual Evaluation Report - IER



Remote evaluation



Remote evaluation process

1. Allocation of each proposal to three experts. Experts must explicitly accept or not accept to evaluate the proposals allocated to them in the electronic system (SEP). Acceptance implies no known conflict of interest.
2. Assessment of each proposal by each evaluator individually. Each evaluator produces an IER (individual evaluation report) which is irreversibly recorded with scores and comments.
3. After all IERs are signed, all IERs will become visible for the Recorder.
4. The median of the overall scores of three IERs is used to decide whether a remote consensus process is started. The thresholds are 12 points for PHC-19 and 10 points for PHC-20, HCO-1 and HCO-2.

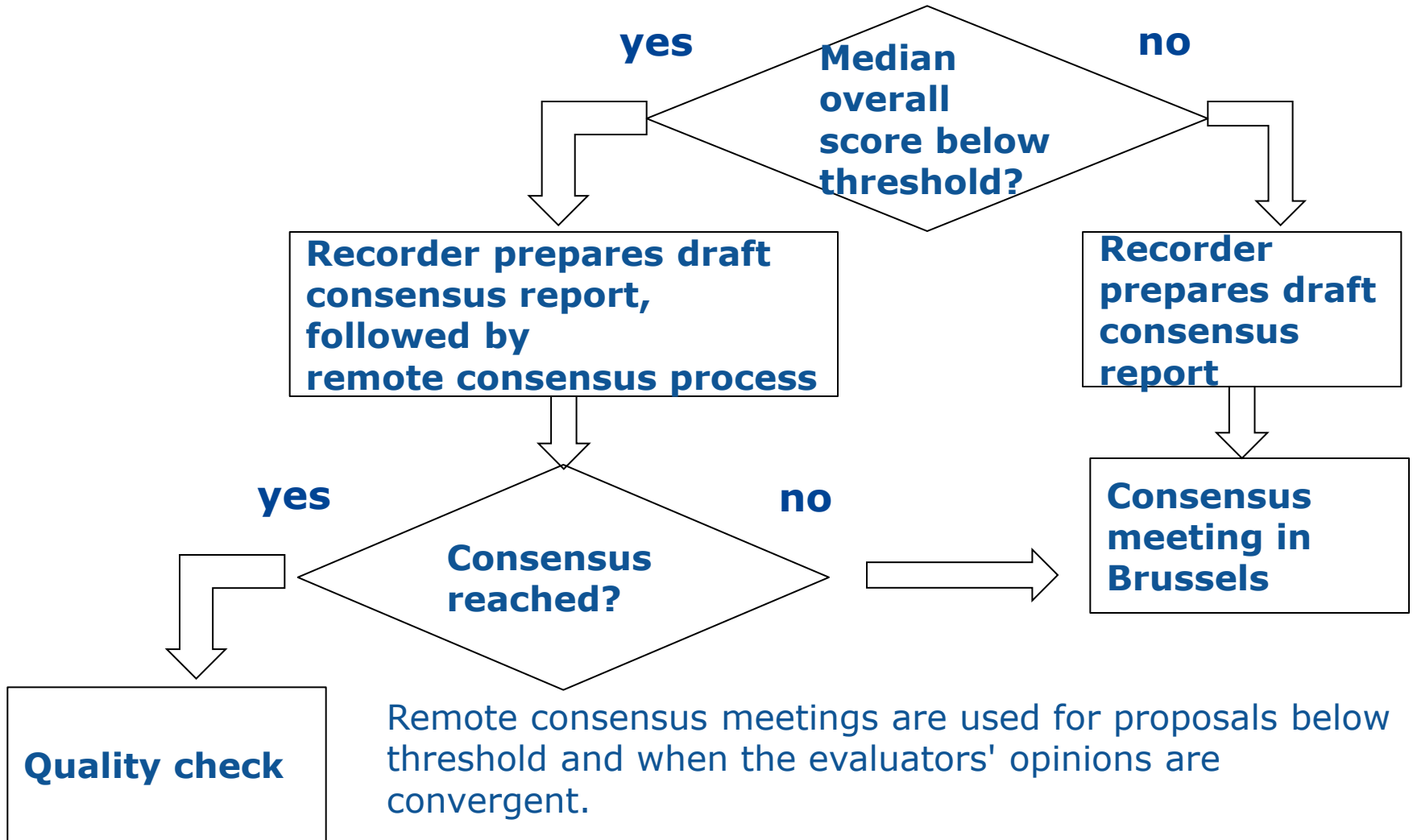
Example for PHC-19 (threshold: 12)

(9, 9, 15): Median 9 => remote consensus process

(1, 14, 15): Median 14 => consensus process in Brussels

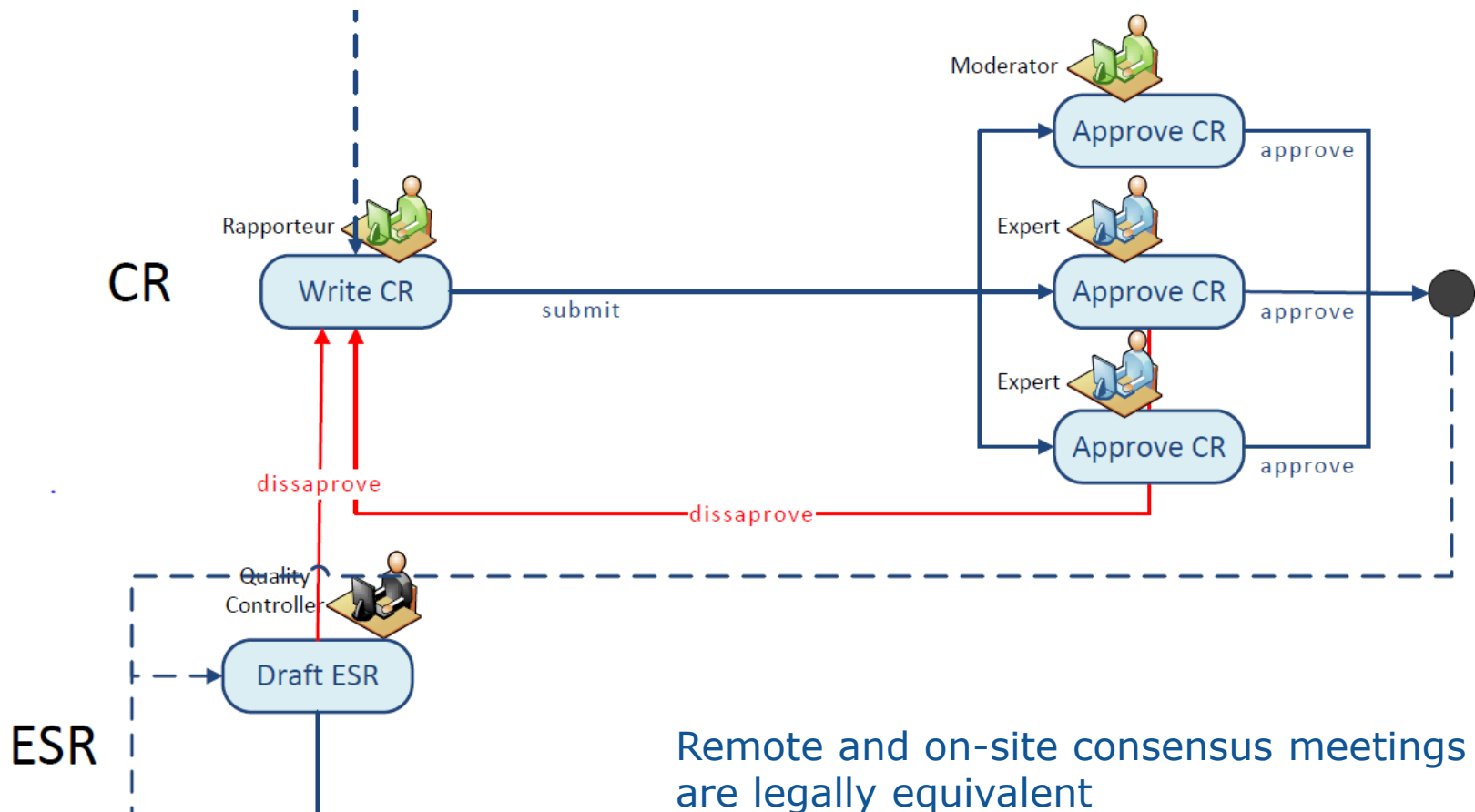


Remote evaluation - decision tree





Consensus process: remote or on-site will follow the same workflow





Consensus process

4. Appointment of a *recorder* who is tasked with drafting a CR (consensus report). Where needed, intervention of the moderator who may start an e-mail discussion or, in difficult cases, a telephone conference.
5. Approval or rejection of the draft CR by all evaluators (the draft as well as the evaluator's comments are irreversibly recorded). In case of rejection by one or more evaluators, preparation of a revised draft and response from the evaluators. This process can be repeated more than once.
6. If all experts and the moderator agree on a draft CR it can be signed and becomes the CR.



Consensus process, continuation

8. For those rare cases where the views are not converging during the remote consensus process : Discussion will be continued on-site in Brussels.
9. For proposals evaluated and CR approved the CR becomes a draft Evaluation Summary Report (ESR). This will be quality checked by a Commission official instantly, which may lead to a request for improvement. The Recorder and Evaluators need to handle this and re-approve the CR.



FET – Future and Emergent Technologies

PHC – Personalizing Health and Care

IMI - Innovative Medicine Initiative

They differ in respect of emphasis on criteria:

- Excellence
- Impact
- Implementation



FET – Future and Emergent Technologies

Emphasis on innovation

Calls/topics descriptions allow plenty of scope for applicants to propose innovative solutions of their own choice

Criterion 1 - Excellence, Current score: - / 5.0; **Threshold 4.0; Weight 60% ; Priority 1**

Criterion 2 - Impact, Current score: - / 5.0; Threshold 3.5; Weight 20% ; Priority 2

Criterion 3 - Quality and efficiency of the implementation, Current score: - / 5.0; Threshold 3.0; Weight 20% ; Priority 3

Consensus Report – collation of Individual Reports
Panel Meeting



IMI - Innovative Medicine Initiative

Two stage evaluation

First stage

15 pages proposals [Excellence, Impact]

Second stage

100 pages proposal [Excellence, Impact, Implementation]

PHC 21 - Advancing active and healthy ageing with ICT: Early detection and intervention

Demographic Ageing

Societal Challenge



Dependency Ratio

- From 1:4 to 1:2
- 80+ doubles by 2025



Cost of Care

- Up by 4-8 % of GDP by 2025



Human Resources

- Shrinking work force
- Lacking 20 million carers by 2020

Major Opportunity



Empowerment

- Active Ageing



New Care Models

- Home based
- Integrated care
- Large Efficiency gains



Growth and Markets

- 3000 B€ wealth
- 85 Million Consumers - and growing

PHC-21: 165 proposals submitted; expected EC funding per proposal: 3-4 M €
Budget: 20 M €, ~5-7 proposals may be funded
~5-12 proposal per reviewer



SCORING

Scores must be in the range 0-5.

Interpretation of the score:

0 *The proposal fails to address the criterion or cannot be assessed due to missing or incomplete information.*

1 Poor. *The criterion is inadequately addressed, or there are serious inherent weaknesses.*

2 Fair. *The proposal broadly addresses the criterion, but there are significant weaknesses.*

3 Good. *The proposal addresses the criterion well, but a number of shortcomings are present.*

4 Very good. *The proposal addresses the criterion very well, but a small number of shortcomings are present.*

5 Excellent. *The proposal successfully addresses all relevant aspects of the criterion. Any shortcomings are minor.*

O czym pamiętać pisząc projekt





Pisząc projekt trzeba mieć w pamięci formularz recenzji i starać się odpowiedzieć na poszczególne punkty





Criterion 1 - Excellence

Current score: 3.0 / 5; Threshold 4; Weight 100% ; Priority 1

Note: The following aspects will be taken into account

- The extent that the proposed work corresponds to the topic description in the work programme. If a proposal is partly out of scope, this must be reflected in the scoring, and explained in the comments.
- Clarity and pertinence of the objectives
- Credibility of the proposed approach
- Soundness of the concept, including trans-disciplinary considerations, where relevant
- Extent that proposed work is ambitious, has innovation potential, and is beyond the state of the art (e.g. ground-breaking objectives, novel concepts and approaches)



Criterion 2 - Impact

Current score: 3.0 / 5; Threshold 4; Weight 100% ; Priority 2

Note: The following aspects will be taken into account, to the extent to which the outputs of the project should contribute at the European and/or International level:

- The expected impacts listed in the work programme under the relevant topic
- Enhancing innovation capacity and integration of new knowledge
- Strengthening the competitiveness and growth of companies by developing innovations meeting the needs of European and global markets, and where relevant, by delivering such innovations to the markets
- Any other environmental and socially important impacts (not already covered above)
- Effectiveness of the proposed measures to exploit and disseminate the project results (including management of IPR), to communicate the project, and to manage research data where relevant



Criterion 3 - Quality and efficiency of the implementation

Current score: 3.5 / 5; Threshold 3; Weight 100% ; Priority 3

Note: The following aspects will be taken into account:

- Coherence and effectiveness of the work plan, including appropriateness of the allocation of tasks and resources
- Complementarity of the participants within the consortium (when relevant)
- Appropriateness of the management structures and procedures, including risk and innovation management



Operational Capacity

Based on the information provided in the proposal, do all the partners in this proposal possess the basic operational capacity to carry out the proposed work?

If NO, please indicate the partner(s) concerned, and provide a short explanation. In any case, evaluate the full proposal, taking into account all partners and activities.

Proposal content corresponds, wholly or in part, to the topic description against which it is submitted, in the relevant work programme part

Overall comments



Trochę uwag praktycznych

- Starać się o zwięzłość
- Nie powtarzać dosłownie tematów „call’u”
- Starać się odpowiedzieć na wszystkie punkty formularza recenzji



POWODZENIA!



The end